

H₀: There is no significant association between the students studying in various Programmes offered by the Colleges and using of bus facilities

Case Processing Summary

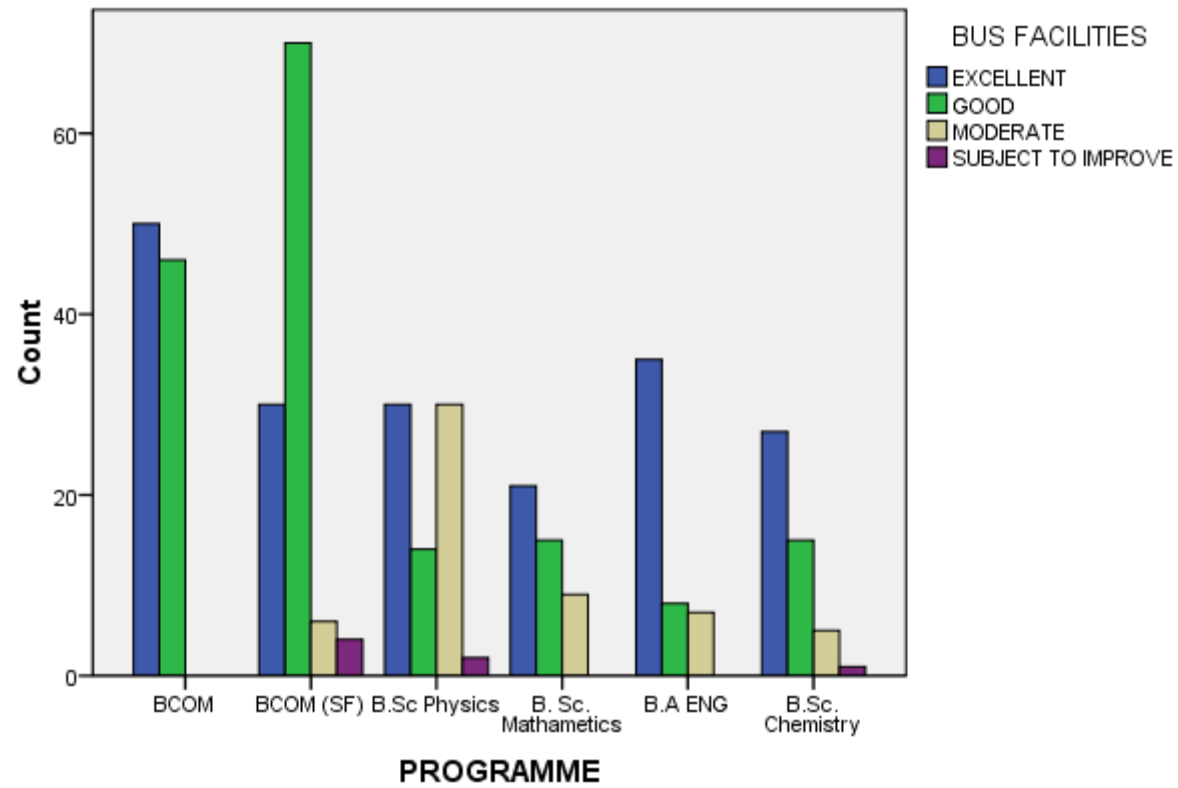
	Cases					
	Valid		Missing		Total	
	N	Percent	N	Percent	N	Percent
PROGRAMME * BUS FACILITIES	425	100.0%	0	.0%	425	100.0%

PROGRAMME * BUS FACILITIES Cross tabulation						
Count						
		BUS FACILITIES				
		EXCELLENT	GOOD	MODERATE	SUBJECT TO IMPROVE	Total
PROGRAMME	BCOM	50	46	0	0	96
	BCOM (SF)	30	70	6	4	110
	B.Sc Physics	30	14	30	2	76
	B. Eco (Tam)	20	10	5	1	36
	B. Eco (Eng)	20	5	3	1	29
	B. Sc. Mathametics	21	15	9	0	45
	B.A ENG	35	8	7	0	50
	B.Sc. Chemistry	27	15	5	1	48
Total		233	183	65	9	490

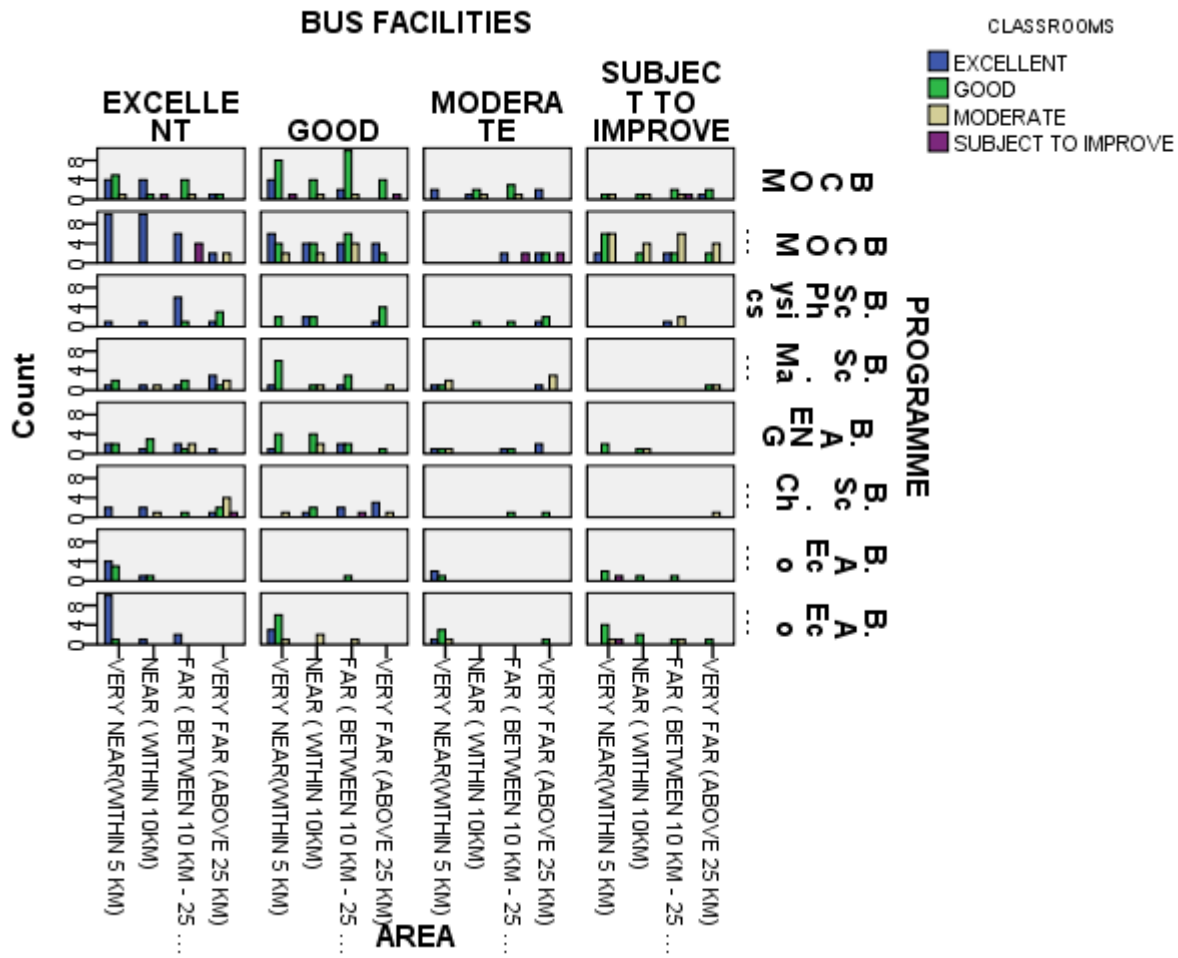
Chi-Square Tests

	Value	df	Asymp. Sig. (2-sided)
Pearson Chi-Square	1.168E2 ^a	15	.000
Likelihood Ratio	121.966	15	.000
Linear-by-Linear Association	.369	1	.544
N of Valid Cases	425		

Bar Chart



Graph



Bus Facilities:

Students are mostly satisfied with the Bus facilities to the MDT Hindu College. Our college has arranged a bus stop for the convenience of the students this year. So Government buses through this way stopped in front of the college which is very useful to the students.

Interpretation:

From the above table it is clear that the value of chi-square is 1.168. The P value (0.000) is smaller than the Standard alpha value (0.05). Hence the null hypothesis is rejected. The result is significant. Hence there is no significant association between the students studying in various Programmes offered by the Colleges and using of bus facilities. So the opinion about the Bus facilities of the college is favorable.

H₀: There is no association between different programme of the students and the toilet facilities

Gender * TOILETS

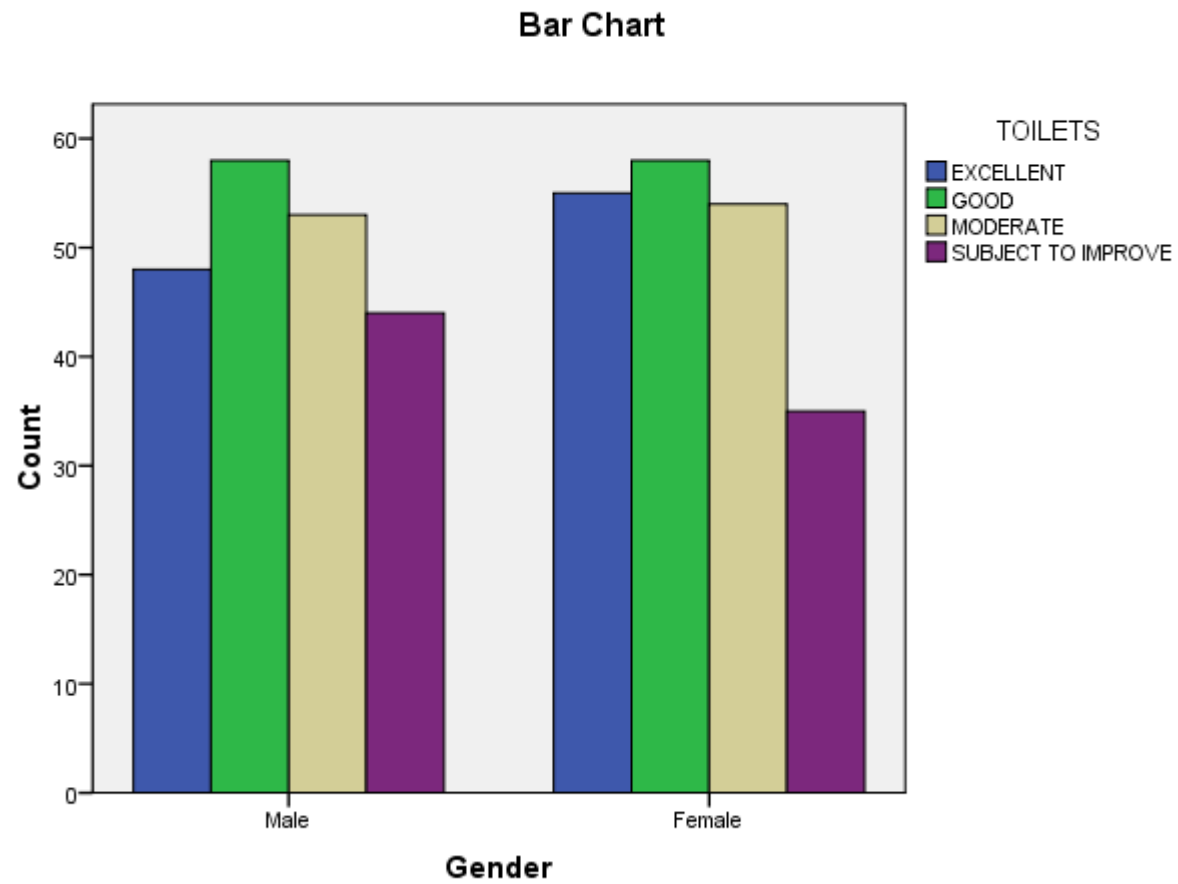
Count		Crosstab				Total
		TOILETS				
		EXCELLENT	GOOD	MODERATE	SUBJECT TO IMPROVE	
Gender	Male	98	68	63	49	278
	Female	65	58	54	35	212
Total		163	126	117	84	490

Chi-Square Tests

	Value	df	Asymp. Sig. (2-sided)
Pearson Chi-Square	1.508 ^a	3	.680
Likelihood Ratio	1.511	3	.680
Linear-by-Linear Association	1.205	1	.272
N of Valid Cases	405		

Interpretation:

From the above table it is clear that the value of chi-square is 1.508. The P value (0.000) is smaller than the Standard alpha value (0.05). Hence the null hypothesis is rejected. The result is significant. Hence there is an association between different programme of the students and toilet facilities. So the opinion about the toilet facilities of the college is favorable.



H_0 : There is no association between different programme of the students and canteen facilities

Gender * CANTEEN

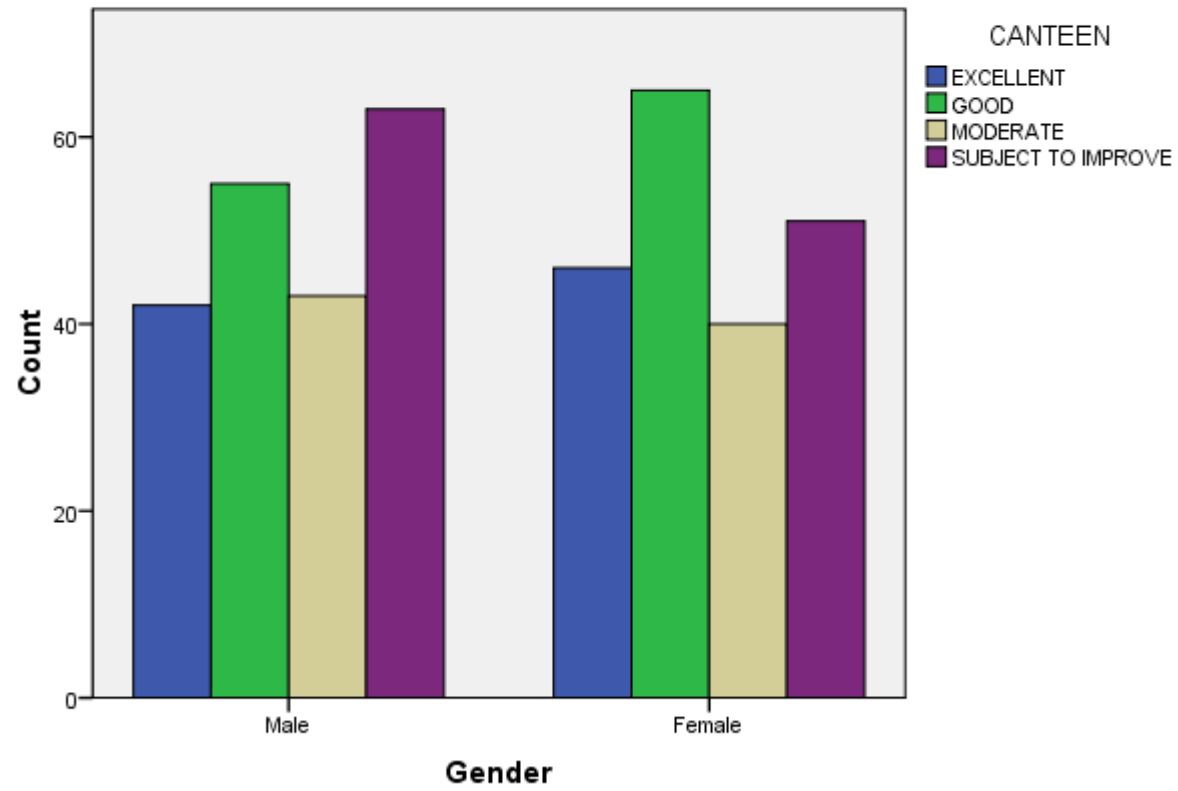
Crosstab

Count		CANTEEN				Total
		EXCELLENT	GOOD	MODERATE	SUBJECT TO IMPROVE	
Gender	Male	42	55	43	63	203
	Female	46	65	40	51	202
Total		88	120	83	114	405

Chi-Square Tests

	Value	df	Asymp. Sig. (2-sided)
Pearson Chi-Square	2.384 ^a	3	.497
Likelihood Ratio	2.388	3	.496
Linear-by-Linear Association	1.834	1	.176
N of Valid Cases	405		

Bar Chart



Interpretation:

From the above table it is clear that the value of chi-square is 2.384. The P value (0.000) is smaller than the Standard alpha value (0.05). Hence the null hypothesis is rejected. The result is significant. Hence there is an association between different programme of the students and canteen facilities. So the opinion about the canteen facilities of the college is favorable.

H₀: There is no association between different programme of the students and the drinking water facilities

Gender * DRINKING WATER

Count		Crosstab				Total
		DRINKING WATER				
		EXCELLENT	GOOD	MODERATE	SUBJECT TO IMPROVE	
Gender	Male	55	52	55	41	203
	Female	51	59	44	48	202
Total		106	111	99	89	405

Chi-Square Tests

	Value	df	Asymp. Sig. (2-sided)
Pearson Chi-Square	2.363 ^a	3	.501
Likelihood Ratio	2.366	3	.500
Linear-by-Linear Association	.112	1	.737
N of Valid Cases	405		

Interpretation:

From the above table it is clear that the value of chi-square is 2.363. The P value (0.000) is smaller than the Standard alpha value (0.05). Hence the null hypothesis is rejected. The result is significant. Hence there is an association between different programme of the students and drinking water. So the opinion about the drinking facilities is favorable.

Bar Chart

